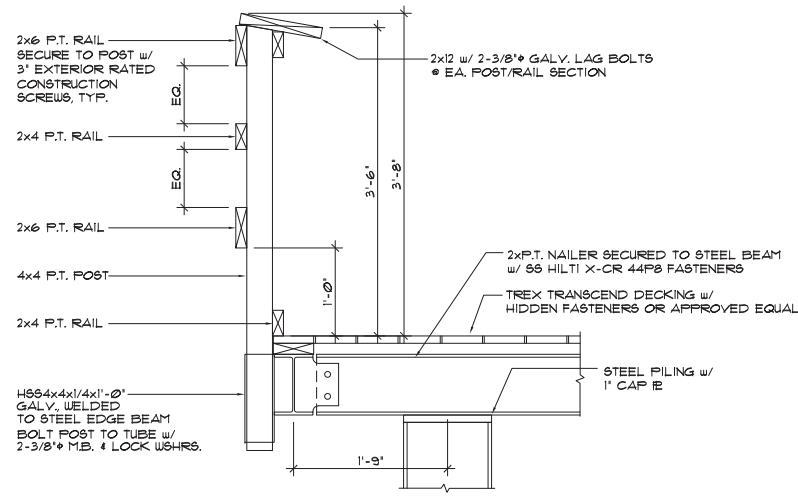


RAILING DETAIL-ACCESSIBLE

1"=1'-0"

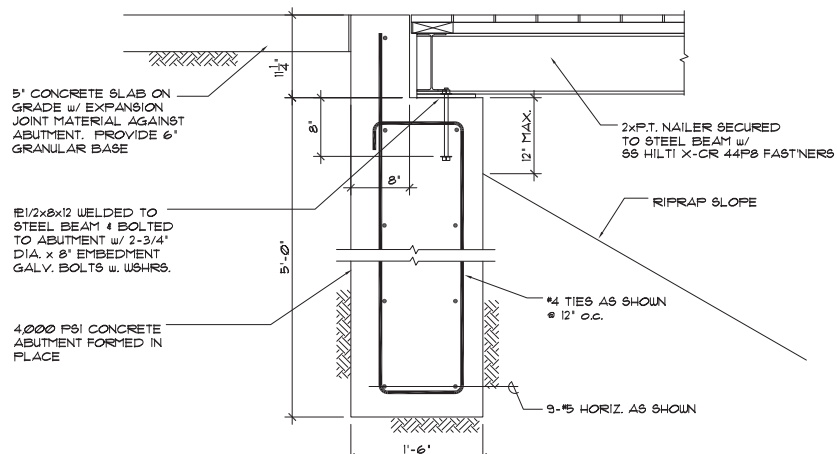
3



RAILING DETAIL-STANDARD

1"=1'-0"

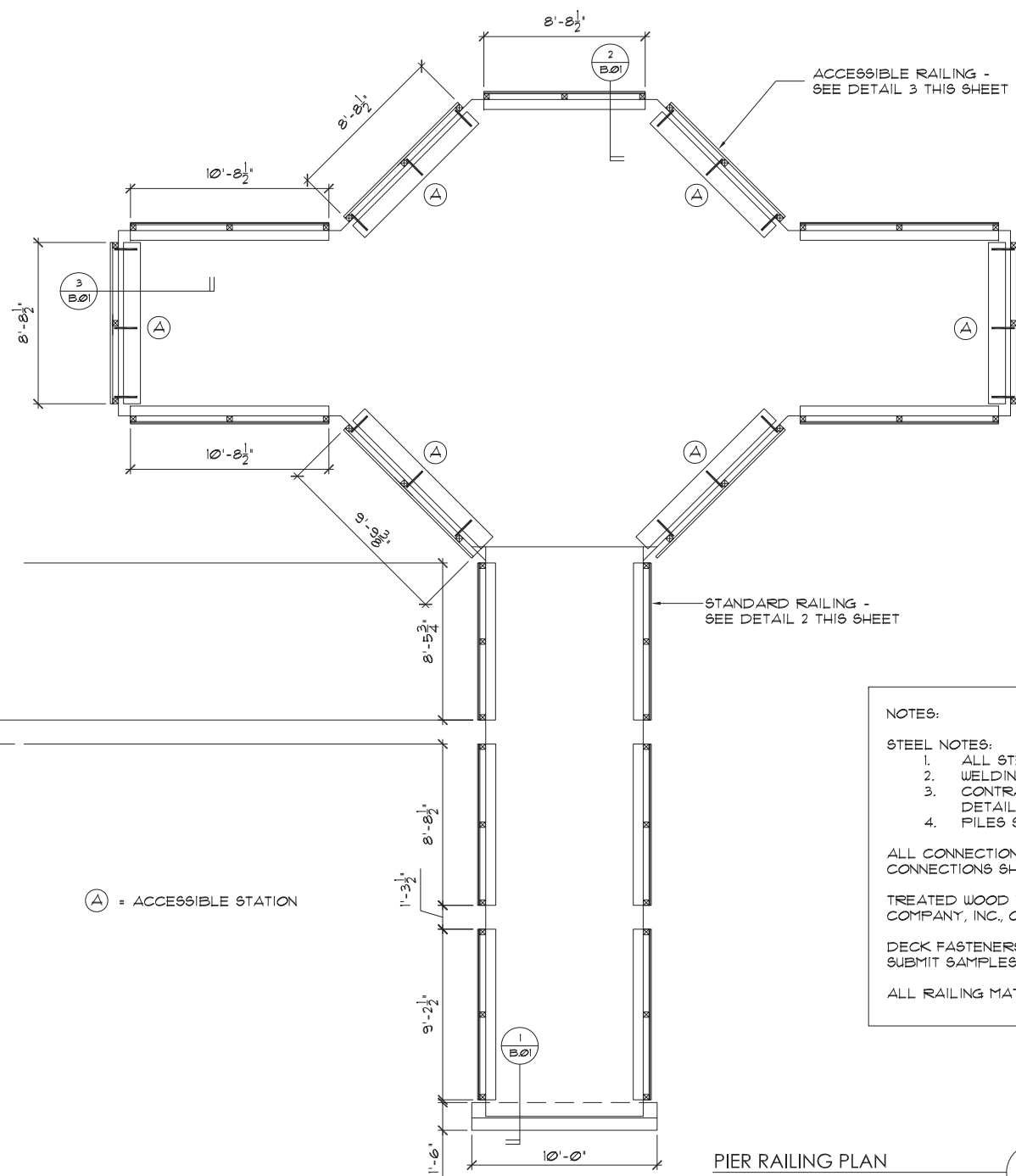
2



ABUTMENT DETAIL

1"=1'-0"

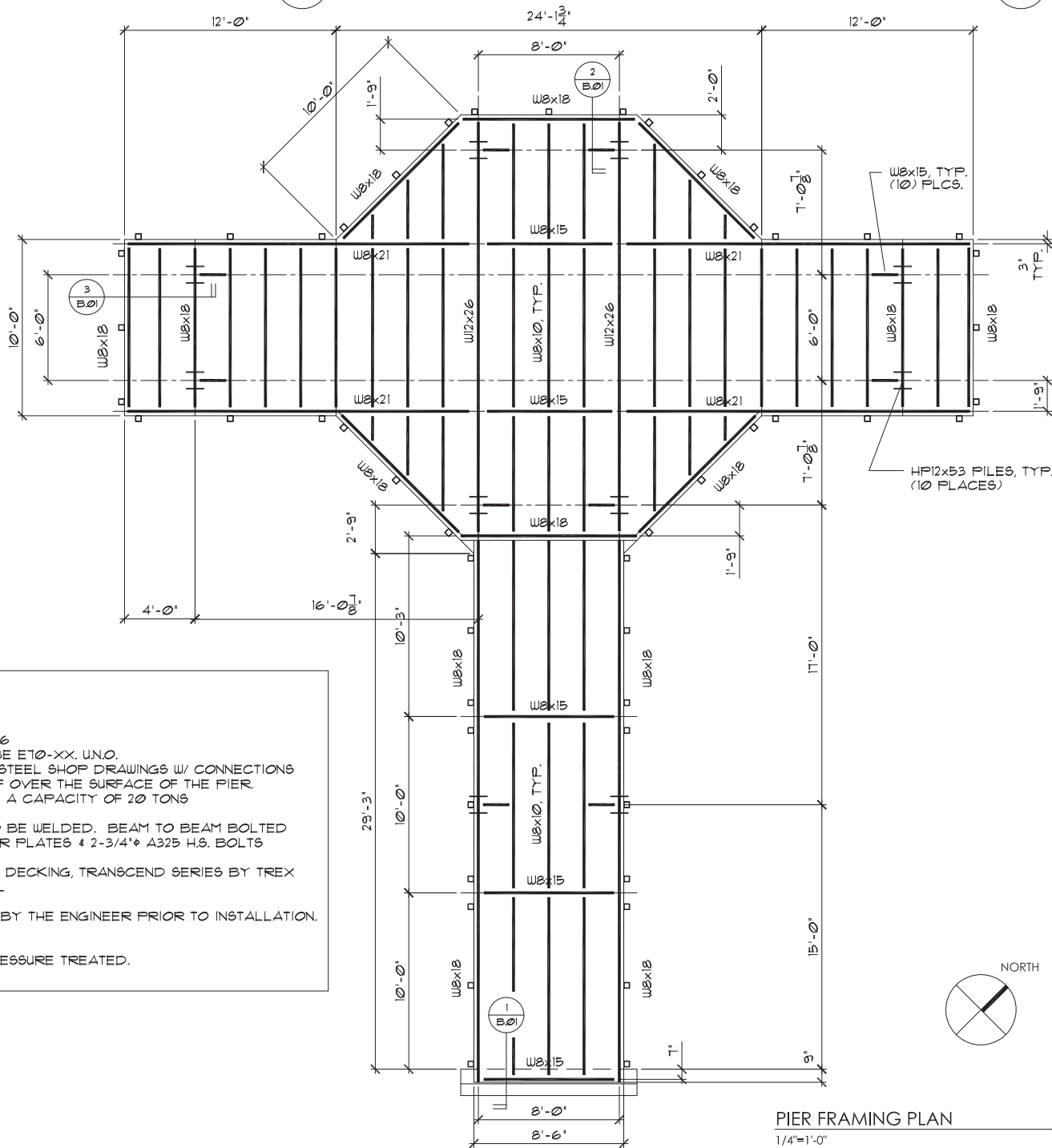
1



PIER RAILING PLAN

1/4"=1'-0"

B



PIER FRAMING PLAN

1/4"=1'-0"

A

NOTES:

STEEL NOTES:

1. ALL STEEL TO BE ASTM A-36
2. WELDING ELECTRODES TO BE E70-XX, U.N.O.
3. CONTRACTOR TO PROVIDE STEEL SHOP DRAWINGS w/ CONNECTIONS DETAILED FOR L.L. ±100 PPF OVER THE SURFACE OF THE PIER.
4. PILES SHALL BE DRIVEN TO A CAPACITY OF 20 TONS

ALL CONNECTIONS NOT INDICATED TO BE WELDED. BEAM TO BEAM BOLTED CONNECTIONS SHALL BE w/ 3/8" SHEAR PLATES & 2-3/4" A325 H.S. BOLTS

TREATED WOOD NAILERS, COMPOSITE DECKING, TRANSCEND SERIES BY TREX COMPANY, INC., OR APPROVED EQUAL

DECK FASTENERS TO BE APPROVED BY THE ENGINEER PRIOR TO INSTALLATION. SUBMIT SAMPLES.

ALL RAILING MATERIAL SHALL BE PRESSURE TREATED.

IOWA DEPARTMENT OF
NATURAL RESOURCES
ENGINEERING SERVICES - WALLACE BUILDING
502 E. 9TH ST., DES MOINES, IA 50319-0034
P: 515.725.8200
F: 515.725.8202



ACCESSIBLE FISHING PIER PLANS

ACCESSIBLE FISHING PIER AND PATH

BIG CREEK STATE PARK

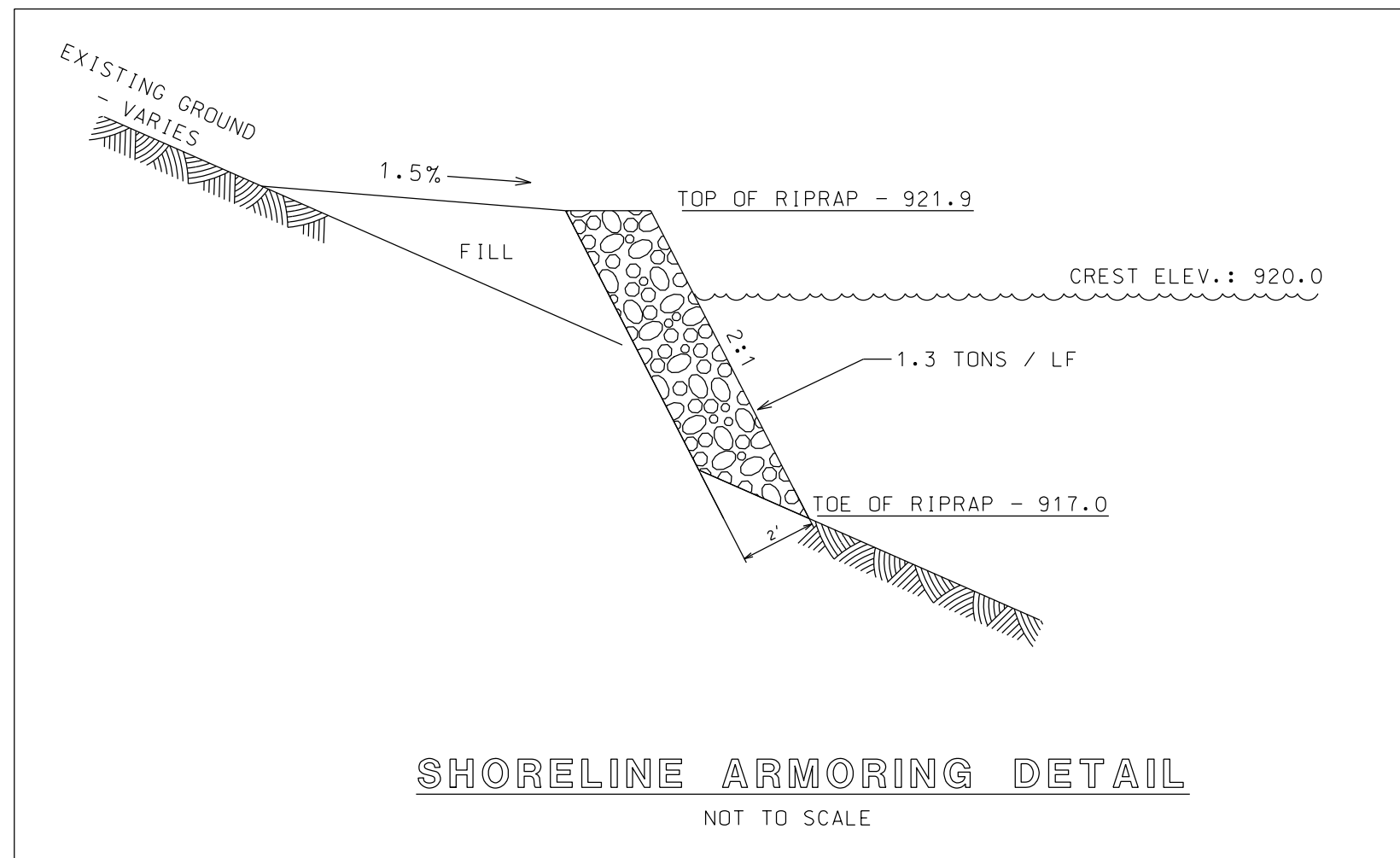
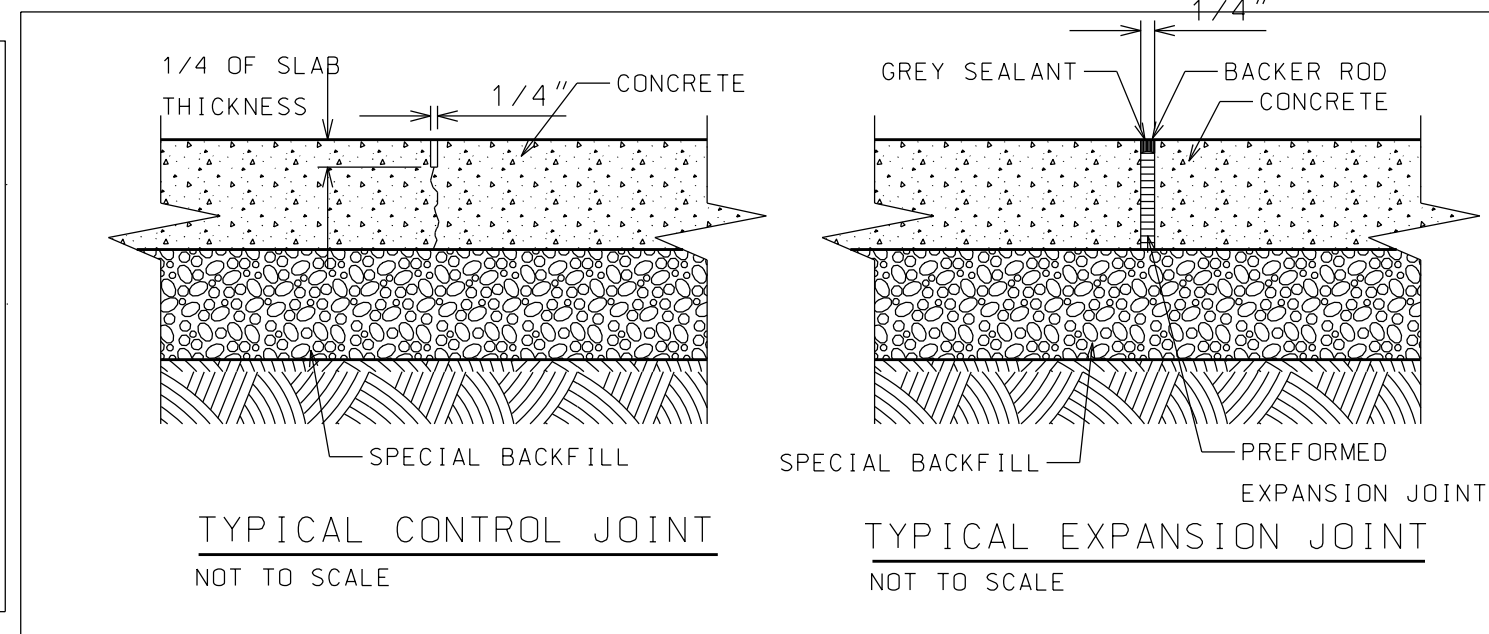
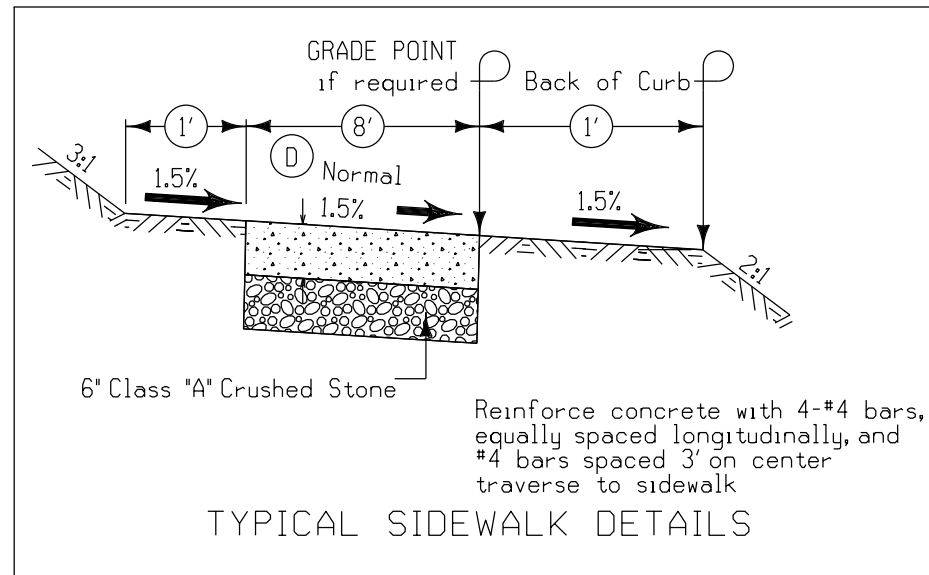
POLK COUNTY, IOWA

13476 NW BIG CREEK DR.

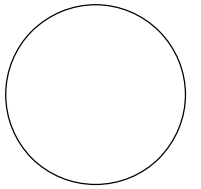
NO.	BY	DATE	REVISION

DRAWN BY: DL PROJECT NUMBER: 21-02-77-12
CHK'D BY: DATE: 06.17.2021

SHEET No: B.01



CONSULTANT:



**IOWA DEPARTMENT OF
NATURAL RESOURCES**

ENGINEERING SERVICES - WALLACE BUILDING
502 E. 9TH ST., DES MOINES, IA 50319-0034



TYPICAL CROSS SECTIONS AND DETAILS

FISHING PIER & PATH FOR:

BIG CREEK STATE PARK

POLK COUNTY

NO.	BY	REVISION

DRAWN BY: PROJECT NUMBER:
21-02-77-12

CHK'D BY: DATE:

SHEET No:

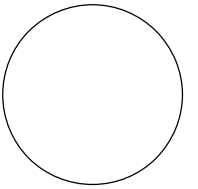
B.02

ESTIMATED PROJECT QUANTITIES			
ITEM NO.	ITEM	UNIT	TOTAL
1	Mobilization	Lump Sum	1
2	Excavation, Class 10, Waste	CY	992
3	Excavation, Class 10, Embankment	CY	26
4	Demolition of Existing Pier	Lump Sum	1
5	Sediment Log, 8"	LF	300
6	PCC Sidewalk Removal	SY	10
7	5" Reinforced PCC Sidewalk	SY	239
8	Class A Crushed Stone	Tons	75
9	Revetment, Class D	Tons	385
10	Seeding, Fertilizing, and Mulching	Lump Sum	1
11	Fishing Pier, Complete	Lump Sum	1
12	6" PCC Patch	SY	193
13	Construction Staking	Lump Sum	1

ESTIMATE REFERENCE INFORMATION	
ITEM NO.	DESCRIPTION
1	A. Clearing of standing brush and downed trees is incidental to this line item. All woody debris shall be removed from the project site or stockpiled near the Disc Golf area as shown on sheet A.02.
2	A. Waste soil may be stockpiled at the East Boneyard, located on sheet A.02
4	A. Demolish all of existing fishing pier and piles above lake bottom. B. Remove existing piles below grade that may interfere with new piles.
5	A. Sediment log shall be placed along the fishing path, as directed by the Engineer. B. Sediment log materials shall be biodegradable, and shall remain in place at the close of the project.
6	A. Remove existing approach slab.
10	A. All seeding, fertilizing, and mulching shall be applied hydraulically. B. Mulching is incidental to this line item. C. Seed mix shall include Iowa DOT Native Grass, Table 2601.03-5 and Rural Stabilizing Crop, Table 2601.03-1
11	A. HP12x53 Piles are assumed to be 27 feet long.
12	A. This line item consists of replacing damaged pavement with 6" PCC (C-mix), including pavement sawcutting, removal, base rock, and concrete. B. Contractor shall limit bike trail damage to 30 linear feet. C. Contractor shall limit parking lot damage to 1,500 square feet.

GENERAL NOTES	
<p>Verify actual locations and elevations with DNR Engineer.</p> <p>All work shall conform to and be performed in accordance with all applicable codes and ordinances.</p> <p>The contractor shall visit the site and inspect the project area and thoroughly familiarize themselves with the actual job conditions prior to bidding and the start of work. Failure to visit the project site shall not relieve the contractor from performing the work in accordance to the plans, specification, special provisions and contract.</p> <p>The contractor shall verify, at the site, all dimensions and conditions shown on the plans and shall notify the DNR Engineer of any discrepancies, omissions, and/or conflicts prior to proceeding with the work.</p> <p>It shall be the contractor's responsibility to provide waste areas or disposal sites for excess material (excavated material or broken concrete) which is not desirable to be incorporated into the work involved on this project. No payment for overhaul will be allowed for material hauled to these sites. No material shall be placed within the right-of-way, unless specifically stated in the plans or approved by the DNR Engineer.</p> <p>The contractor shall not disturb desirable grass areas and desirable trees outside the construction limits. The contractor will not be permitted to park or service vehicles and equipment or use these areas for storage of materials. Storage, parking and service areas will be subject to the approval of the DNR Engineer.</p> <p>Where utilities and fixtures are shown as Existing on the plans or encountered within the construction area, it shall be the responsibility of the contractor to notify the DNR Engineer of those utilities prior to the beginning of any construction. The contractor shall be afforded access to these facilities for necessary modification of services. Underground facilities, structures and utilities have been plotted from available surveys and records and therefore their locations must be considered approximate only. It is possible there may be others, the existence of which is presently not known or shown. It is the contractor's responsibility to determine their existence and exact location and to avoid damage thereto. No claims for additional compensation will be allowed to the contractor for any interference or delay caused by such work.</p> <p>The contractor shall shape graded area to maintain surface drainage. All elevations are to finish grade.</p> <p>The contractor is expected to have materials, equipment, and labor available on a daily basis to install and maintain erosion control features on the project. This may involve seeding, silt fence, rock ditch checks, silt basins or silt dikes.</p>	

CONSULTANT:



**IOWA DEPARTMENT OF
NATURAL RESOURCES**

ENGINEERING SERVICES - WALLACE BUILDING
502 E. 9TH ST., DES MOINES, IA 50319-0034



QUANTITIES AND GENERAL INFORMATION

FISHING PIER & PATH FOR:

BIG CREEK STATE PARK

POLK COUNTY

NO.	BY	REVISION

DRAWN BY: PROJECT NUMBER:
21-02-77-12

CHK'D BY: DATE:

SHEET No:

C.01



EXISTING PARKING LOT

EXISTING BIKE TRAIL

ELEV. 922.0

SHORELINE ARMORING
Revetment, Class E - 385 tons

FISHING PATH
5" Reinforced PCC Sidewalk - 239 SY
Class A Crushed Stone - 75 tons

PROTECT EXISTING
SIDEWALK

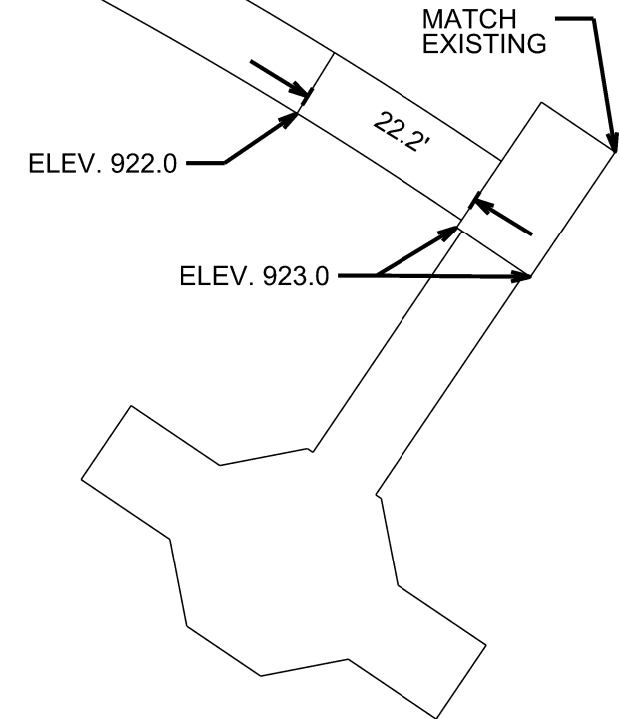
REMOVE AND DISPOSE
OF RAILROAD TIE STAIR
TREADS

PROTECT EXISTING
RETAINING WALL

Remove Existing PCC Approach
Pavement Removal - 10 SY

REMOVE AND REPLACE EXISTING PIER

SEE INSERT



SEE INSERT

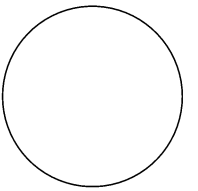
- NOTES:
DEMOLITION NOTES:
1. DEMOLISH ALL OF EXISTING FISHING PIER AND PILES ABOVE LAKE BOTTOM.
2. REMOVE EXISTING PILES BELOW GRADE THAT MAY INTERFERE WITH NEW PILES.
3. REMOVE EXISTING APPROACH SLAB.

THE NEW FISHING PATH SLAB SHALL BE 5" PCC CONCRETE OVER 6" CLASS A GRANULAR BASE. THE PATH SHALL BE 8 FEET WIDE BY 250 LF LONG WITH JOINTS AT 8 FEET CENTERS. ARMOR SHORELINE BANK WITH CLASS E REVETMENT FOR 275 LF.

PROVIDE A NEW APPROACH SLAB AFTER THE PIER IS FRAMED AND THE ABUTMENT IS IN PLACE. REPAIR THE EXISTING GUARDRAIL ADJACENT PIER TO MATCH EXISTING.



CONSULTANT:



**IOWA DEPARTMENT OF
NATURAL RESOURCES**
ENGINEERING SERVICES - WALLACE BUILDING
502 E. 9TH ST., DES MOINES, IA 50319-0034



SITE PLAN

FISHING PIER & PATH FOR:

BIG CREEK STATE PARK

POLK COUNTY

NO.	BY	REVISION

DRAWN BY: PROJECT NUMBER:
21-02-77-12

CHK'D BY: DATE:

SHEET No:

D.01